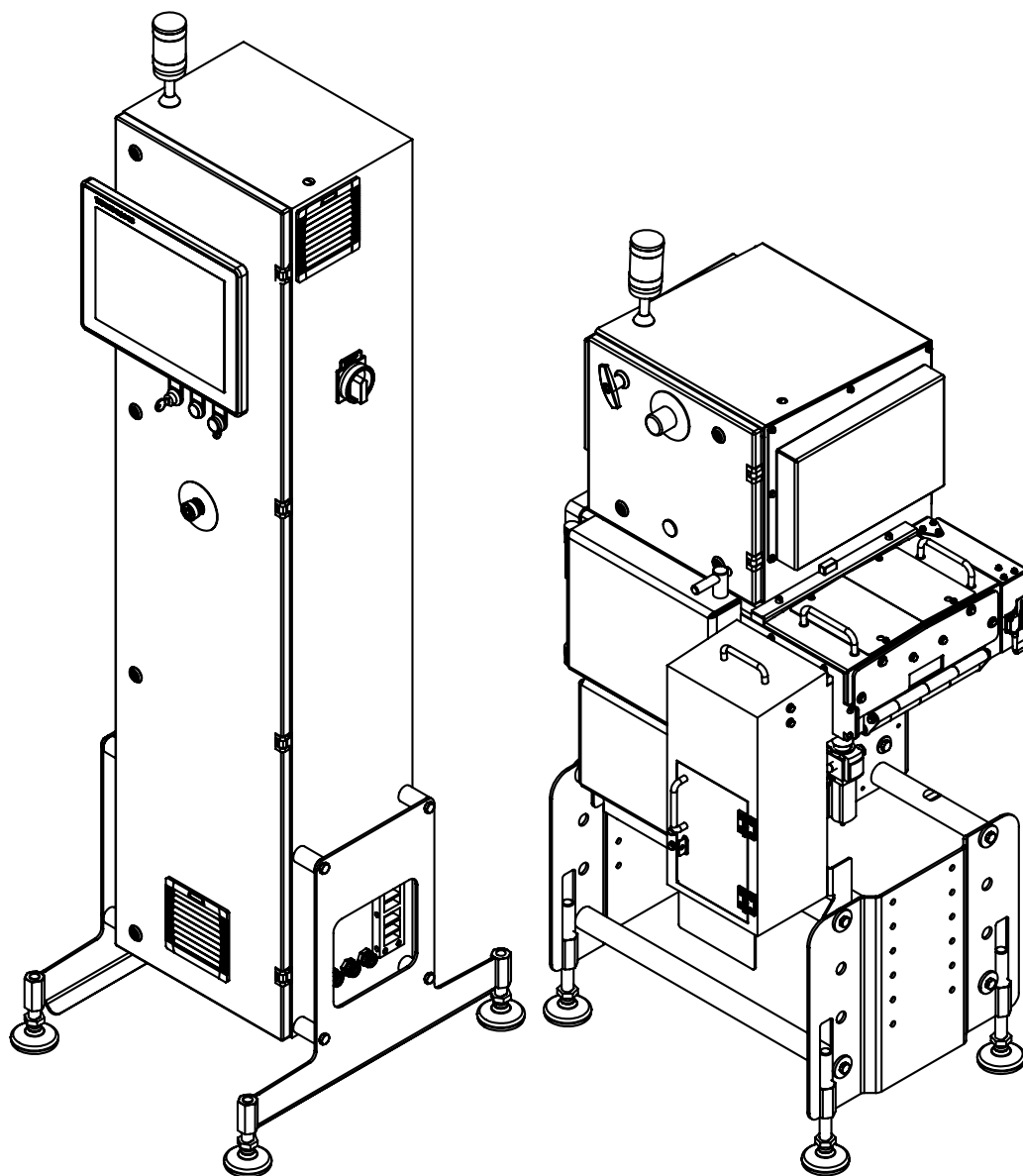


SC 2000

TECHNICAL DATA

X-RAY



MINI X-RAY SCANNER

SPACE SAVING PRODUCT INSPECTION

SC 2000

The **SC 2000 „Mini“** complements the already globally successful (due to its modular philosophy) SC product family. The outstanding feature of the SC 2000 is its extremely compact design. The scope of performance of this network-enabled scanner includes foreign body detection, quantity, shape, completeness, and fill level control. The scanning process continuously documented.

On a total system length of 700 mm, the products are inspected and safely discharged from the product stream. The SC 2000 „Mini“ reliably achieves outstanding inspection results at high product throughputs of up to 400 pieces/min - with the lowest false reject rates.

Thanks to the external control cabinet, the X-ray scanner can be integrated into existing production lines easily and flexibly. All of the X-ray inspection systems from WIPOTEC-OCS have the same familiar and convenient user interface found in the checkweigher line. The system is cont-

rolled from a 15" colour TFT display with touchscreen panel that always shows the current X-ray image. The machine is made entirely of stainless steel and meets the IP65 protection class.



KEY FEATURES

- ✓ Highest modularity in design
- ✓ Integrated conveyor technology with discharge units
- ✓ Switch cabinet can be set up separately from the measuring head

YOUR BENEFITS

- ✓ The broadest inspection for maximum safety
- ✓ Extremely compact design for easy integration

TECHNICAL DATA

SC 2000

X-RAY SOURCE

	SC 2000
X-ray type	X-ray unit
Output	max. 150 W
HV-Voltage (infinitely variable)	max. 50 kV (electronically limited)
HV-Current (infinitely variable)	max. 3 mA
Cooling system	Temperature range (standard): control cabinet fan Temperature range (optional): additional cooling unit

X-RAY SENSOR

	SC 2000
Sensor technology	Diode array
Resolution	0.4 mm
Scanning speed	max. 120 m/min

DRIVE

	SC 2000
Drive	I-Mot3 777-G8-SW
Gear ratio	8

HMI

	SC 2000
Display	15" Color-TFT with touchscreen
Available languages	Danish, Dutch, English, Finnish, French, German, Hungarian, Italian, Norwegian, Polish, Portuguese, Russian, Slovak, Spanish, Swedish, Turkish, (other languages on request)

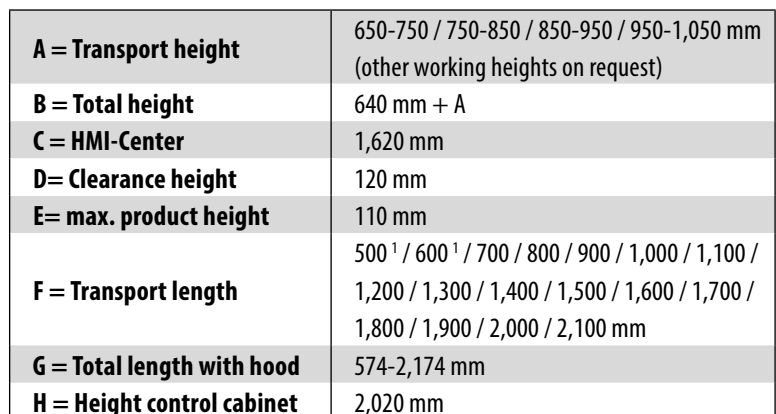
AMBIENT CONDITIONS

	SC 2000
Relative humidity	20 to 80 % (not condensing)
Temperature range	+5 to +40 °C

FURTHER INFORMATION

	SC 2000
Hygiene design	completely constructed in stainless steel product area easy to clean (C-shape) IMOT servo motor technology with tractor drive
Protection class	IP65 (except fans on the control cabinet door and on the core segment)
Power supply	230 VAC; 50/60 Hz; 2.2 kVA Connection via a separate supply line protected with 10 A.
SCCR	5 kA
Weight (depending on the equipment)	ca. 400 kg (depending on variant)
Product storage	100 products, expandable

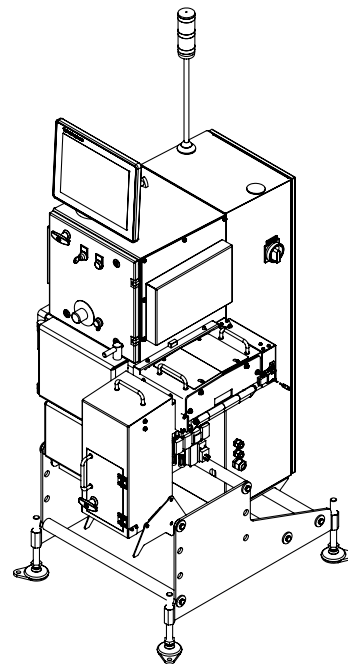
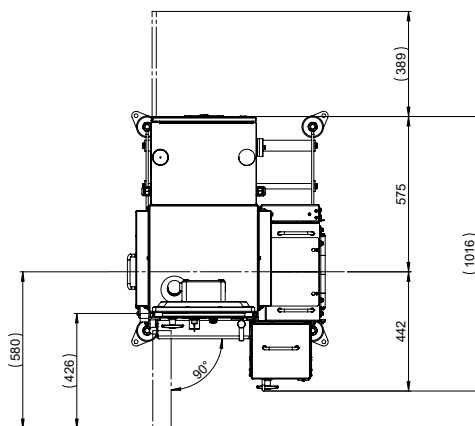
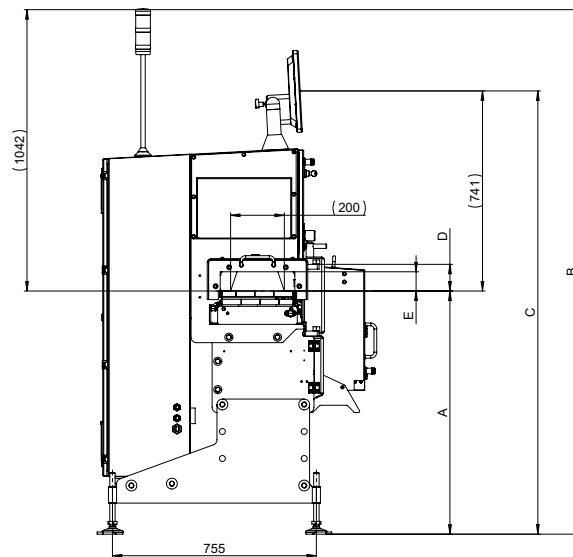
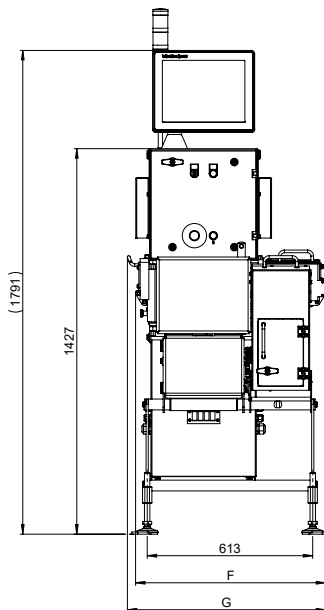
SC 2000



WWW.WIPOTEC-OCS.COM

MACHINE DIMENSIONS WITH INTEGRATED CONTROL CABINET

SC 2000



A = Transport height	650-750 / 750-850 / 850-950 mm (other working heights on request)
B = Total height	1,042 mm + A
C = HMI-Center	741 mm + A
D= Clearance height	120 mm
E= max. product height	110 mm
F = Transport length	500 ¹ / 600 ¹ / 700 / 800 / 900 / 1,000 / 1,100 / 1,200 / 1,300 / 1,400 / 1,500 / 1,600 / 1,700 / 1,800 / 1,900 / 2,000 / 2,100 mm
G = Total length with hood	574-2,174 mm
H = Height control cabinet	2,020 mm

¹ Integration of rejection not possible

These specifications are reference values of the standard machine excluding application- or weighing-specific add-on parts.
All entries in mm | Drawing shows design example

This image shows a full page of white paper with horizontal ruling lines. The lines are evenly spaced and extend across the width of the page, typical of notebook or legal stationery. There are no margins, text, or other markings present.